



AD **ADVANCED**[™]
DIAGNOSTICS



SMART
Aerial +

SMART Aerial + Cloud Cloning Solution

The Smart Aerial+ from Advanced Diagnostics simplifies and speeds the key cloning process.

Cloning calculations are made using Advanced Diagnostics proprietary servers to guarantee reliability, ensuring that the latest routines are always available and time-consuming software updates are avoided.

Smart Aerial+ works hand in hand with the MYKEYS Pro app to guide the user through the entire cloning process, providing all the necessary information needed to deliver a perfect duplicate key.

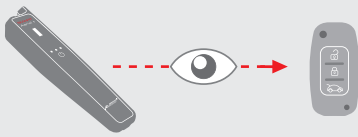
In addition to cloning, Smart Aerial+ offers all the features of the original Smart Aerial.



Up to **3X** Faster*

CLONING PROCESS

1 Smart Aerial+ reads original key data



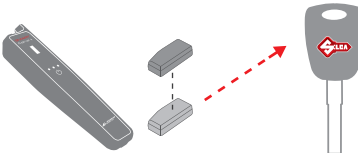
2 Data sent to cloud for calculation



3 Cloning data sent back to Smart Aerial+



4 Smart Aerial+ clones the transponder to create a new key



TECHNICAL DATA

Power supply: 5 VDC mains connection via USB port. 3.7 VDC integrated battery

Connection:
Wi-Fi - Bluetooth

Dimensions:
Length: 210 mm, Width: 48 mm
Depth: 30 mm

Weight (unpacked): 120 g



MAIN FEATURES



FAST
Cloning process
up to **3X** faster*



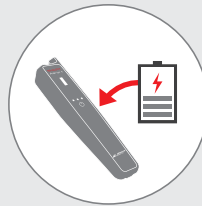
FUTURE PROOF
Updateable, no
memory capacity limits



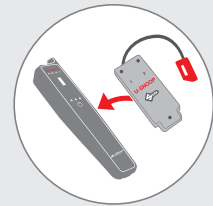
GUIDED PROCEDURES
Step by step using the
MYKEYS Pro app



RELIABLE
Superior data
processing power using
AD proprietary servers



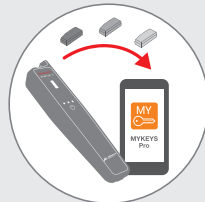
PORTABLE
Integrated,
rechargeable
battery



EASIER CLONING
with Snoop
functions
included

* For the ID46 cloning procedure compared to the Silca RW4 Plus.

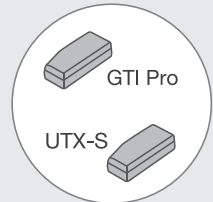
TRANSPONDER MANAGEMENT



**TRANSPONDER
PRE-SETTING**
via the MYKEYS Pro
app



**TRANSPONDER
PRE-CODING.**
Compatible with
Smart Pro



**NEW MULTI
TRANSPONDERS**
Compatible with the new
Silca GTI-Pro and UTX-S



P1J5 - DEPL. S.A. - EN
8 10 527 82 0264 11

(*) In compliance with current regulations relating to industrial property, please note that, both for "Silca", "dormakaba", "Kobal", "Ilco" and "Advanced Diagnostics", the trademarks or trade names mentioned in our document are the exclusive property of third parties not affiliated with Silca S.p.A. or its subsidiaries. G. Silca S.p.A. does not accept any responsibility for the use of the trademarks mentioned in this document for purposes other than those intended for the purpose of Silca's products. This brochure is reserved exclusively for professional key cutters who use Silca products. The illustrations and technical data regarding the products in the document are to be considered indicative. Silca reserves the right to alter products designs, dimensions or info to improve the products quality. The contents of this document are fully protected by Copyright and may not be copied or reproduced in any form, without written permission from Silca S.p.A. Any controversy shall be settled by the Courts where the company Silca S.p.A. has its headquarters, with express exclusion of any other court.

SILCA S.p.A. Via Podgora, 20 (Z.I.) - 31029 Vittorio Veneto (TV) - Italy
Telephone +39 0438 9136 Fax +39 0438 913800

www.silca.biz - www.silca-automotive.com
www.advanced-diagnostics.com



dormakaba Group