



# MATRIX EVO S



**The mechanical machine for high quality cutting of dimple and laser keys**

**Matrix Evo S is the quality mechanical key cutting machine for dimple keys with flat cuts and laser keys.**

The machine features:

- fixed clamp with three positions for accommodating different types of keys,
- electromechanical gauging system,
- smooth and controlled carriage movements,
- sprung tracer point with micrometric regulation,
- led lights.

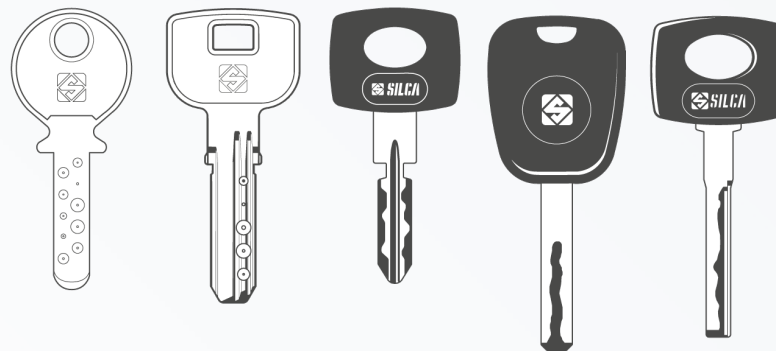


Matrix Evo S has been designed and manufactured in conformity with CE mark European standards.

# MATRIX EVO S



Matrix Evo S is the mechanical key cutting machine for **dimple keys with flat cuts and laser keys with internal, external and double external cuts.**





# MATRIX EVO S



## Optimized clamp for a wide range of keys

- Matrix Evo S features a **fixed clamp with three different positions** for easily installing a wide array of keys.
- The clamp can be removed without effort thanks to its dove tail shape, facilitating the installation of an extensive range of adapters and optional accessories.
- The machine comes with the adapters M, designed for accommodating laser keys with narrow stem (Mercedes® HU64 type keys).

# MATRIX EVO S



## Precise calibration for high quality cuts

- The machine is equipped with **sprung tracer point and micrometric regulation ring** for precise calibration and high quality cutting results.
- **The electromechanical gauging system** features an intuitive display for checking the correct setting of the tools before cutting:
  - Central bar illuminated in green: calibration ok.
  - Left-hand arrow illuminated in red: only the tracer point is in contact with the key.
  - Right-hand arrow illuminated in red: only the cutter is in contact with the key.

# MATRIX EVO S



## Exclusive tool identifying collar

- Cutters and tracer points can be easily identified thanks to the **coloured plastic collars**, red and black respectively, with the name of the tool engraved on. This patented solution is a Silca exclusive and helps immediately recognize the tool you need to install.

## Perfect illumination

- The **led lights** ensure an ideal illumination of the work station.

# MATRIX EVO S



## Ergonomic solution

- The lever of the vertical Z axis has a button that enables you to lower the tracer point/cutter unit. It also integrates the functions of automatic cutter motor start and Z-axis block. This solution ensures more safety for the operator and grants a faster and more efficient use.
- Knobs and levers feature an ergonomic design.



# MATRIX EVO S



## Comfortable to use

- The rollbar allows you to rest the left hand while shifting the carriage lever for better control of the carriage and smoother movements.

## Safe for the user

- The machine features a transparent safety shield and a thermal-magnetic mains switch.



# MATRIX EVO S



## Practical and capacious accessories areas

- **The incorporated pull-out accessories tray** has 20 moulded positions for lodging cutters and tracer points and a wide space for other accessories, so your work area will be neat and perfectly organized.
- **A capacious tool area on top of the machine** can hold keys and other accessories while cutting.

# MATRIX EVO S



## Technical Data

<b>Power supply</b>	230V - 50/60Hz
<b>Cutter motor</b>	single phase and speed
<b>Tool speed</b>	6000 rpm (for cutters in high speed steel)
<b>Clamp</b>	fixed and removable, with interchangeable plates
<b>Standard tools</b>	Cutters F1 (dimple keys) and F22 (laser keys) in high speed steel HSS Tracer points T1 (dimple keys) and T22 (laser keys) Adapters M for Mercedes® keys type HU64
<b>Movements</b>	on three axes by ball guides
<b>Runs</b>	X axis: 40 mm, Y axis: 50 mm, vertical Z axis: 30 mm
<b>Dimensions</b>	Width: 310 mm (400 mm with maximum lever operating space), Depth: 400 mm, Height: 470 mm
<b>Weight</b>	24,6 Kg

# MATRIX EVO S



[www.silca.biz](http://www.silca.biz)

© Copyright by Silca S.p.A. 2018 All Rights Reserved

In compliance with current regulations relating to industrial property, we hereby state that the trade-marks or trade names mentioned in this document are the exclusive property of authorized manufacturers of locks and users. Said trade-marks or trade names are nominated only for the purposes of information so that any lock for which our keys are made can be rapidly identified. This document is reserved exclusively for professional key cutters who use Silca products. / All information and illustrations in this document are for guidance only. Silca reserves the right to alter products designs, dimensions or info to improve the products quality. The contents of this document are fully protected by Copyright and may not be copied or reproduced in any form, without written permission from Silca S.p.A. Any controversy shall be settled by the Courts of Justice where the company has its headquarters, with express exclusion of any other court.