

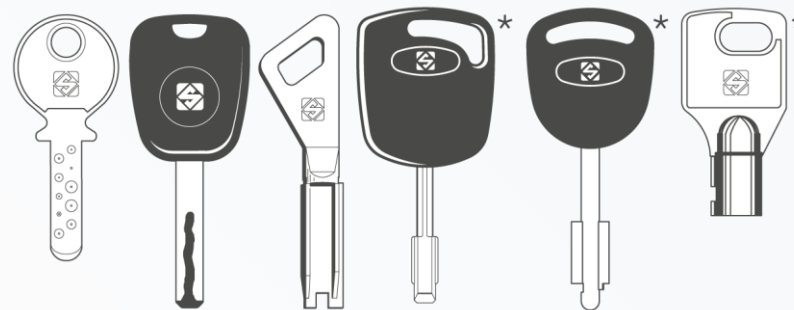


TWISTER II



The mechanical key machine for dimple, laser and Fichet® keys

Twister II is an easy to use, reliable and convenient mechanical key cutting machine **delivering accurate and consistent duplicates of dimple, laser and Fichet® type keys.** The machine provides a range of optional accessories for expanding its capabilities to tubular keys and to a wide range of vehicle keys.



* Duplicable with specific optional accessories

CE Twister II has been designed and manufactured in conformity with CE mark European standards.

TWISTER II



Practical and comfortable to operate

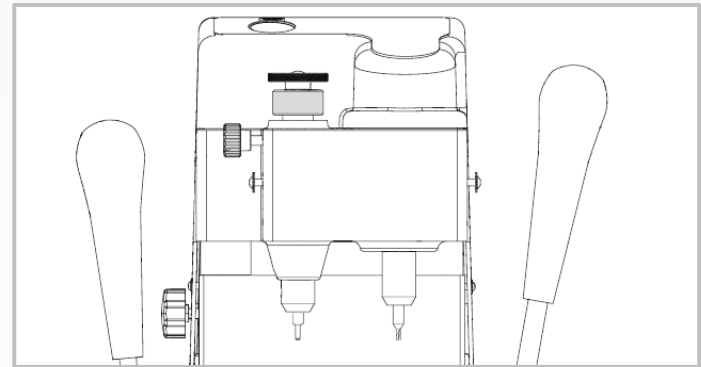
- The two-axis carriage is controlled by a system of ball bearings and guides for **smooth and effortless movements**.
- An ergonomic handle on the left side of the machine for **locking the carriage** facilitates the duplication of keys and prevents movement during transport.

TWISTER II



Spring loaded tracer point for accurate results

- **The spring loaded tracer point**, activated by rotating the locking nut, grants proper centering of cuts on the keys, ensures a perfect depth alignment and allows for adjustment to worn keys.

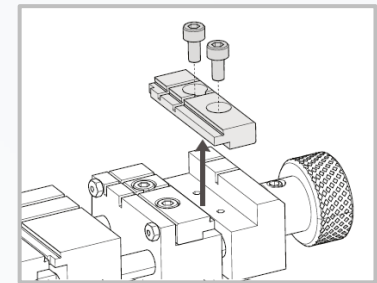
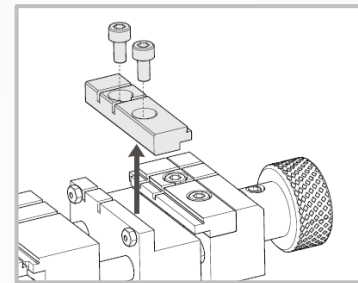


TWISTER II



Easy to maintain

- Twister II features an optimized and economical repair solution for substituting worn out clamps thanks to the **replaceable jaws of the clamp on the cutter side of the machine.**



TWISTER II



Energy-saving and ergonomic illumination

- The working area of the machine is illuminated by an **integrated LED light**, an energy-efficient and healthier solution which allows for cost savings, avoids flickering and limits eyestrain after a prolonged use.

TWISTER II



Compact and solid

- Designed to have a small footprint, Twister II is **compact, light and built to last**.

Safe for the user

- The wide transparent shield protects the operator from moving parts, metal swarf and chips while cutting.
- The **thermal magnetic safety switch** turns the machine off automatically in case of power failures, safeguarding the machine itself.

TWISTER II



Standard Equipment



Tools for dimple keys:

- Tracer point: TE01
- Cutter: FE01

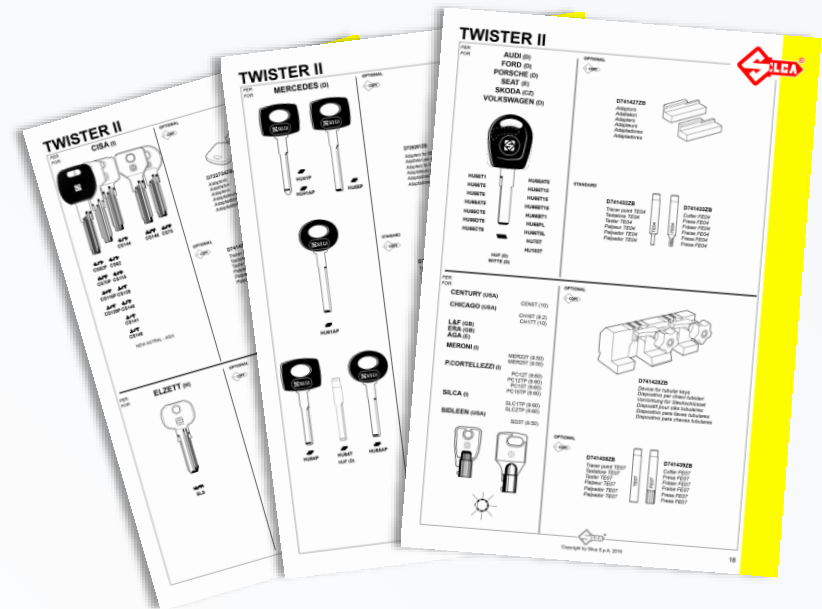


Tools for laser keys:

- Tracer point: TE04
- Cutter: FE04

Optional accessories

- A specific range of optional accessories is available to expand the machine capabilities.



TWISTER II



Dati Tecnici

Power supply	230V-50/60Hz - 110V-50/60Hz
Cutter motor	one-speed single phase
Cutters	HSS (high speed stell)
Tool speed	6000 rpm (+/- 10%)
Clamp	universal interchangeable
Movements	on 3 axes: vertical axis on bars, longitudinal and transversal axes on ball guides
Runs	X-axis: 40 mm, Y-axis: 50 mm, Z-axis: 30 mm
Dimensions	width: 250 mm, depth: 370 mm, height: 370 mm
Weight	24 kg

TWISTER II



www.silca.biz

© Copyright by Silca S.p.A. 2019 All Rights Reserved

In compliance with current regulations relating to industrial property, we hereby state that the trade-marks or trade names mentioned in this document are the exclusive property of authorized manufacturers of locks and users. Said trade-marks or trade names are nominated only for the purposes of information so that any lock for which our keys are made can be rapidly identified. This document is reserved exclusively for professional key cutters who use Silca products. / All information and illustrations in this document are for guidance only. Silca reserves the right to alter products designs, dimensions or info to improve the products quality. The contents of this document are fully protected by Copyright and may not be copied or reproduced in any form, without written permission from Silca S.p.A. Any controversy shall be settled by the Courts of Justice where the company has its headquarters, with express exclusion of any other court.